

high aesthetics  
duct system



### Requirements

- > fast and easy construction and installation
- > minimal amount of space
- > off-cuts reduction
- > high aestetichs

### Applications

- > quadrangular ducts to be installed in civil, commercial and professional systems with pressures up to 300 Pa



**P3ductal** smart8  
fast construction duct[al] system

## P3ductal smart8.12: octagonal air ducts solution for low pressure systems with high aesthetical requirements

The Kit consists of 5 pre-cut Piral HD Hydrotec panels (each one long 1200 mm; equivalent to 6 m of linear duct), 12 mm thick, with 80 µm/80 µm embossed/embossed aluminium and 5 “labyrinth” bayonets. The panels are painted externally with RAL5025 light blue and anti-scratch paint.



### Kit characteristics

#### Panels

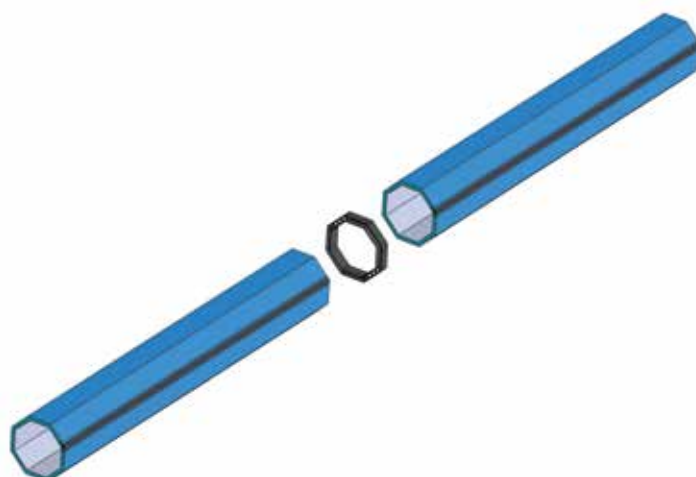
- 5 sheets
- 1200 mm length of each one
- 6 m total linear duct
- 12 mm thickness • 60 kg/m<sup>3</sup> foam density
- 80 µm/80 µm embossed/embossed al.

#### “Labyrinth” bayonet

- 5 bars - 1200 mm length of each one

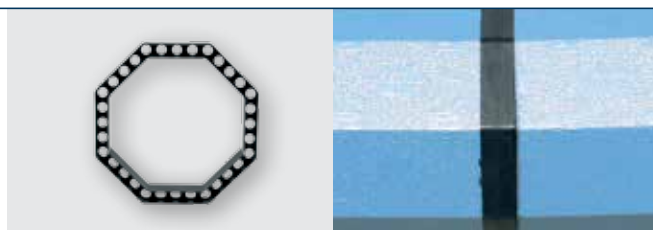


Code	Description
30ST15	P3ductal Smart8.12 kit ø 150 mm
30ST20	P3ductal Smart8.12 kit ø 200 mm
30ST25	P3ductal Smart8.12 kit ø 250 mm
30ST30	P3ductal Smart8.12 kit ø 300 mm
30ST35	P3ductal Smart8.12 kit ø 350 mm
30ST40	P3ductal Smart8.12 kit ø 400 mm



## straight frames for joining straight ducts

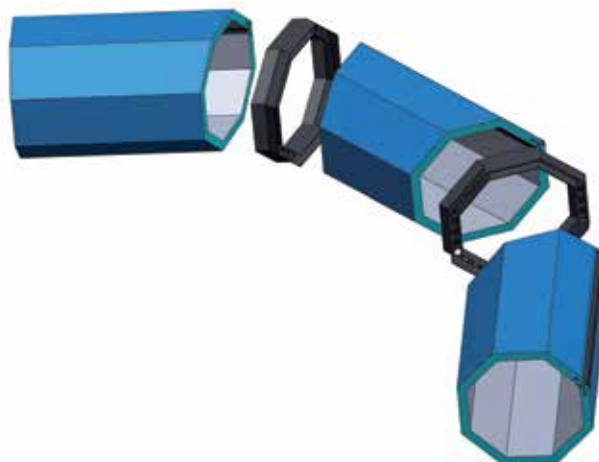
Straight octagonal nylon frames, black in colour, fire reaction class V0 according to UL94, used for the fast joining of linear ducts.



## Straight frames for joining straight ducts

Code	Description
21GD15	Frame for joining straight ducts with section 150 mm
21GD20	Frame for joining straight ducts with section 200 mm
21GD25	Frame for joining straight ducts with section 250 mm
21GD30	Frame for joining straight ducts with section 300 mm
21GD35	Frame for joining straight ducts with section 350 mm
21GD40	Frame for joining straight ducts with section 400 mm

# bend



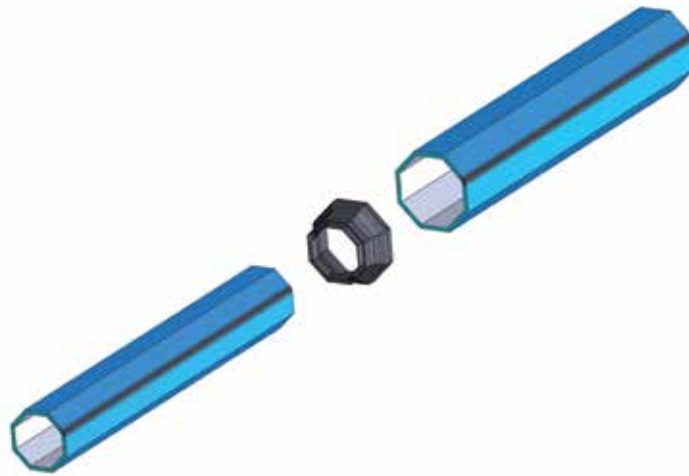
## angled frames for joining angled ducts

Angled octagonal nylon frames, black in colour, fire reaction class V0 according to UL94, used for the fast joining of angled ducts.



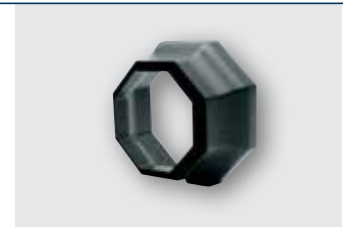
## Angled frames for joining angled ducts

Code	Description
21GC15	Frame for joining angled ducts with $\varnothing$ 150 mm
21GC20	Frame for joining angled ducts with $\varnothing$ 200 mm
21GC25	Frame for joining angled ducts with $\varnothing$ 250 mm
21GC30	Frame for joining angled ducts with $\varnothing$ 300 mm
21GC35	Frame for joining angled ducts with $\varnothing$ 350 mm
21GC40	Frame for joining angled ducts with $\varnothing$ 400 mm



## reductions

Black ABS reduction

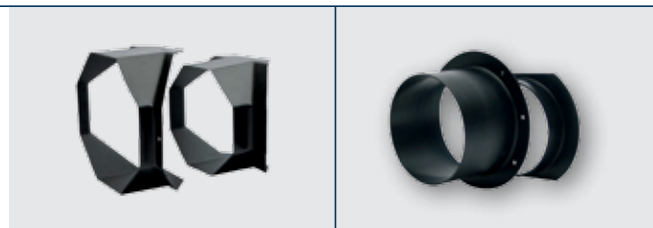


Reduction	
Code	Description
21R02015	Octagonal reduction from $\varnothing$ 200 mm to $\varnothing$ 150 mm
21R02515	Octagonal reduction from $\varnothing$ 250 mm to $\varnothing$ 150 mm
21R02520	Octagonal reduction from $\varnothing$ 250 mm to $\varnothing$ 200 mm
21R03020	Octagonal reduction from $\varnothing$ 300 mm to $\varnothing$ 200 mm
21R03025	Octagonal reduction from $\varnothing$ 300 mm to $\varnothing$ 250 mm
21R03525	Octagonal reduction from $\varnothing$ 350 mm to $\varnothing$ 250 mm
21R03530	Octagonal reduction from $\varnothing$ 350 mm to $\varnothing$ 300 mm
21R04025	Octagonal reduction from $\varnothing$ 400 mm to $\varnothing$ 250 mm
21R04030	Octagonal reduction from $\varnothing$ 400 mm to $\varnothing$ 300 mm
21R04035	Octagonal reduction from $\varnothing$ 400 mm to $\varnothing$ 350 mm

# take-offs and end-caps

## Take-offs and T take-offs

Black ABS take-offs



### Take-offs

Code	Description
21CN15	Take-off $\varnothing$ 150 mm
21CN20	Take-off $\varnothing$ 200 mm
21CN25	Take-off $\varnothing$ 250 mm
21CN30	Take-off $\varnothing$ 300 mm
21CN35	Take-off $\varnothing$ 350 mm
21CN40	Take-off $\varnothing$ 400 mm
21ST15	"T" take-off $\varnothing$ 150 mm
21ST20	"T" take-off $\varnothing$ 200 mm
21ST25	"T" take-off $\varnothing$ 250 mm
21ST30	"T" take-off $\varnothing$ 300 mm
21ST35	"T" take-off $\varnothing$ 350 mm
21ST40	"T" take-off $\varnothing$ 400 mm

## End-caps

Black ABS end-caps



### End-caps

Code	Description
21FD15	Octagonal end-cap $\varnothing$ 150 mm
21FD20	Octagonal end-cap $\varnothing$ 200 mm
21FD25	Octagonal end-cap $\varnothing$ 250 mm
21FD30	Octagonal end-cap $\varnothing$ 300 mm
21FD35	Octagonal end-cap $\varnothing$ 350 mm
21FD40	Octagonal end-cap $\varnothing$ 400 mm

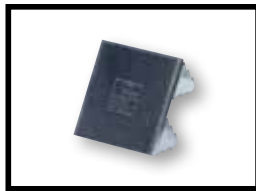
# accessories and equipment

Code	Description
15HP12 <sup>smart</sup>	Piral HD Hydrotec panel th. 12 mm
21CL14	Smart profile glue
21TG02	Straight joining clip
21SS09	Frame hanger bracket for waved aluminium tape
21SS08	Waved aluminium tape for hooked hanger bracket
21FN14	Octagonal duct closing bayonet, 1,2 m long
21PR18	Aluminium "U" section bar for 12 mm panels
21PR19	Aluminium "F" section bar for 12 mm panels
21PR28	Plasterboard profile in aluminium 12 mm
21PR39	Chair section bar in aluminium 12 mm
21NS06	Embossed al. tape, 50 µm thick and 50 mm wide

Code	Description
22SG02	Band saw
22PL03	90° straight jack plane
22PB22	22,5° jack plane
22PL15	Jack plane blades for 12 mm panels
22SQ08	22,5° ABS square
22MT01	Nylon marking pencil
22CT01	Cutter
22CT02	Hack saw
22CT03	Adjustable round cutter for collars
22SL01	Soft spatula
22ML01	Rubber hammer
22MR01	Folding ruler
22MR02	Tape measure



Smart profile glue



Joining clip



Frame hanger bracket



Waved aluminium tape



Closing bayonet



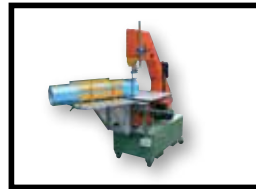
"U" section bar



"F" section bar



Aluminium tape



Band saw



90° jack plane



22,5° jack plane



Blades



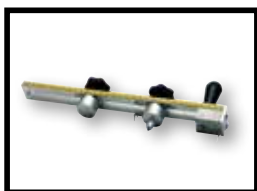
22,5° ABS square



Nylon marking pencil



Cutter and hack saw



Round cutter for collars



Soft spatula and hammer



Folding ruler, tape measure



Panel th. 12 mm